

## ON-PREMISES LAUNDRY

### Softmount Washer-Extractors

6.5 kg (14 lb) Washer-Extractor	33.0 kg (75 lb) Washer-Extractor
8.0 kg (20 lb) Washer-Extractor	40.0 kg (90 lb) Washer-Extractor
11.0 kg (25 lb) Washer-Extractor	52.0 kg (125 lb) Washer-Extractor
14.0 kg (30 lb) Washer-Extractor	80.0 kg (180 lb) Washer-Extractor
18.0 kg (40 lb) Washer-Extractor	100.0 kg (230 lb) Washer-Extractor
24.0 kg (55 lb) Washer-Extractor	120.0 kg (275 lb) Washer-Extractor
28.0 kg (65 lb) Washer-Extractor	



**Speed Queen®**



# ON-PREMISES LAUNDRY SOFTMOUNT WASHER-EXTRACTORS 6.5

MODELS	SY*65	SY*80	SY*105	SY*135	SY*180	SY*240	
Control	QED SELECT	QED SELECT	QED SELECT	QED SELECT	QED SELECT	QED SELECT	
Capacity kg (lb)	6.5 (14)	8 (20)	11 (25)	14 (30)	18 (40)	24 (55)	
Tilt Option	N/A	N/A	N/A	N/A	N/A	N/A	
Dimensions w/o Tilt							
Width mm (in)	710 (27 15/16)	710 (27 15/16)	795 (31 5/16)	795 (31 5/16)	970 (38 3/16)	970 (38 3/16)	
Depth mm (in)	740 (29 1/8)	790 (31 1/8)	795 (31 5/16)	945 (37 3/16)	970 (38 3/16)	1105 (43 1/2)	
Height mm (in)	1115 (43 7/8)	1115 (43 7/8)	1225 (48 1/4)	1225 (48 1/4)	1410 (55 1/2)	1410 (55 1/2)	
Dimensions w/ Tilt							
Width mm (in)	N/A	N/A	N/A	N/A	N/A	N/A	
Depth mm (in)	N/A	N/A	N/A	N/A	N/A	N/A	
Height mm (in)	N/A	N/A	N/A	N/A	N/A	N/A	
Cylinder Diameter mm (in)	530 (20 7/8)	530 (20 7/8)	620 (24 3/8)	620 (24 3/8)	750 (29 1/2)	750 (29 1/2)	
Cylinder Depth mm (in)	305 (12)	350 (13 3/4)	350 (13 3/4)	450 (17 3/4)	410 (16)	545 (21 1/2)	
Cylinder Volume litres (Cu.ft.)	65 (2.3)	75 (2.6)	105 (3.7)	135 (4.8)	180 (6.4)	240 (8.5)	
Door opening size mm (in)	330 (13)	330 (13)	410 (16 1/8)	410 (16 1/8)	460 (18 1/8)	460 (18 1/8)	
Door Bottom to Floor mm (in)	349 (13 3/4)	349 (13 3/4)	342 (13 1/2)	342 (13 1/2)	477 (18 3/4)	477 (18 3/4)	
Wash Speed RPM	49	49	49	49	42	42	
Extract Speed RPM	1165	1165	1075	1075	980	980	
Extract G-Force	400	400	400	400	400	400	
Water Inlet Conn. mm (in)	2 x 19 (3/4)	2 x 19 (3/4)	2 x 19 (3/4)	2 x 19 (3/4)	2 x 19 (3/4)	2 x 19 (3/4)	
Steam Inlet Conn. mm (in)	13 (1/2)	13 (1/2)	13 (1/2)	13 (1/2)	13 (1/2)	13 (1/2)	
Drain Conn. Size mm (in)	76 (3)	76 (3)	76 (3)	76 (3)	76 (3)	76 (3)	
Motor Size kW (HP)	0.75 (1.00)	0.75 (1.00)	1.10 (1.48)	1.50 (2.01)	2.20 (2.95)	3.00 (4.02)	
Voltage/Hz/Phase	200-240V 50/60Hz 1ph 200-240V 50/60Hz 3ph 380-415V+N 50/60Hz 3ph 380-415V 50/60Hz 3ph 440-480V 50/60Hz 3ph	200-240V 50/60Hz 1ph 200-240V 50/60Hz 3ph 380-415V+N 50/60Hz 3ph 380-415V 50/60Hz 3ph 440-480V 50/60Hz 3ph	200-240V 50/60Hz 1ph 200-240V 50/60Hz 3ph 380-415V+N 50/60Hz 3ph 380-415V 50/60Hz 3ph 440-480V 50/60Hz 3ph	200-240V 50/60Hz 1ph 200-240V 50/60Hz 3ph 380-415V+N 50/60Hz 3ph 380-415V 50/60Hz 3ph 440-480V 50/60Hz 3ph	200-240V 50/60Hz 1ph 200-240V 50/60Hz 3ph 380-415V+N 50/60Hz 3ph 380-415V 50/60Hz 3ph 440-480V 50/60Hz 3ph	200-240V 50/60Hz 1ph 200-240V 50/60Hz 3ph 380-415V+N 50/60Hz 3ph 380-415V 50/60Hz 3ph 440-480V 50/60Hz 3ph	200-240V 50/60Hz 1ph 200-240V 50/60Hz 3ph 380-415V+N 50/60Hz 3ph 380-415V 50/60Hz 3ph 440-480V 50/60Hz 3ph
Shipping Dimensions w/o Tilt							
Height mm (in)	1245 (49)	1245 (49)	1345 (52 15/16)	1345 (52 15/16)	1550 (61)	1550 (61)	
Width mm (in)	750 (29 1/2)	750 (29 1/2)	835 (32 7/8)	835 (32 7/8)	1025 (40 3/8)	1025 (40 3/8)	
Depth mm (in)	825 (32 1/2)	825 (32 1/2)	825 (32 1/2)	970 (38 3/16)	1110 (43 11/16)	1240 (48 13/16)	
Shipping Dimensions w/ Tilt							
Height mm (in)	N/A	N/A	N/A	N/A	N/A	N/A	
Width mm (in)	N/A	N/A	N/A	N/A	N/A	N/A	
Depth mm (in)	N/A	N/A	N/A	N/A	N/A	N/A	
Net Weight kg (lb) w/o tilt	170 (375)	185 (408)	210 (463)	255 (563)	380 (838)	430 (948)	
Net Weight kg (lb) w/ tilt	N/A	N/A	N/A	N/A	N/A	N/A	
Shipping Weight kg (lb) w/o tilt	180 (397)	200 (441)	235 (518)	275 (606)	395 (871)	450 (992)	
Shipping Weight kg (lb) w/ tilt	N/A	N/A	N/A	N/A	N/A	N/A	
Agency Approvals	CE, CSA	CE, CSA	CE, CSA	CE, CSA	CE, CSA	CE, CSA	

For the most accurate information, the installation guide should be used for all design and construction purposes. Due to continuous product improvements, design and specifications are subject to change without notice. The quality management system of Alliance Laundry Systems' Czech facility has been registered to ISO 14001:2005 and 9001:2009.

Printed in the U.S.A.

[speedqueen.com/intl](http://speedqueen.com/intl)

# -120.0 KG - QED SELECT CONTROLS

SY*280	SY*335	SY*400	SY*520	SY*800	SY*1000	SY*1200
QED SELECT	QED SELECT	QED SELECT	QED SELECT	QED SELECT	QED SELECT	QED SELECT
28 (65)	33.5 (75)	40 (90)	51.8 (125)	80.7 (180)	100.3 (230)	120 (275)
N/A	N/A	Option	Option	Option	Option	Option
970 (38 3/16)	1195 (47)	1195 (47)	1195 (47)	1495 (58 7/8)	1790 (70 1/2)	1855 (73)
1185 (46 5/8)	1330 (52 3/8)	1430 (56 1/2)	1610 (63 3/8)	1940 (76 3/8)	2005 (78 15/16)	2085 (82 1/16)
1410 (55 1/2)	1905 (75)	1905 (75)	1905 (75)	1985 (78 5/32)	2060 (81 1/8)	2085 (82 1/16)
N/A	N/A	1328 (52 1/4)	1328 (52 1/4)	1620 (63 3/4)	1920 (75 9/16)	2000 (78 3/4)
N/A	N/A	1941 (76 7/16)	2053 (80 13/16)	2292 (90 1/4)	2365 (93 1/8)	2479 (97 5/8)
N/A	N/A	2368 (93 1/4)	2381 (93 3/4)	2434 (95 13/16)	2518 (99 1/8)	2564 (100 15/16)
750 (29 1/2)	914 (36)	914 (36)	914 (36)	1110 (43 11/16)	1200 (47 1/4)	1300 (51 3/16)
620 (24 1/2)	510 (20)	610 (24)	790 (31.1)	838 (33)	860 (33 7/8)	870 (34 1/4)
280 (9.9)	335 (11.8)	400 (14.1)	518 (18.3)	807 (28.5)	1003 (35.4)	1180 (41.7)
460 (18 1/8)	540 (21 5/16)	540 (21 5/16)	540 (21 5/16)	530 (20 7/8)	530 (20 7/8)	650 (25 5/8)
477 (18 3/4)	730 (28 3/4)	730 (28 3/4)	730 (28 3/4)	910 (35 13/16)	977 (38 1/2)	915 (36)
42	38	38	38	36	33	32
915	830	830	830	750	720	695
350	350	350	350	350	350	350
2 x 19 (3/4)	3 x 25 (1)	3 x 25 (1)	3 x 25 (1)	3 x 38 (1 1/2)	3 x 38 (1 1/2)	3 x 38 (1 1/2)
13 (1/2)	19 (3/4)	19 (3/4)	19 (3/4)	25 (1)	25 (1)	25 (1)
76 (3)	2 x 76 (3)	2 x 76 (3)	2 x 76 (3)	2 x 103 (4)	2 x 103 (4)	2 x 103 (4)
3.00 (4.02)	4.00 (5.36)	7.50 (10.06)	7.50 (10.06)	11.00 (14.75)	15.00 (20.12)	18.50 (24.81)
200-240V 50/60Hz 1ph 200-240V 50/60Hz 3ph 380-415V + N 50/60Hz 3ph 380-415V 50/60Hz 3ph 440-480V 50/60Hz 3ph	200-240v/50-60Hz/3 380-415V/50-60Hz/3 440-480V/50-60Hz/3	200-240v/50-60Hz/3 380-415V/50-60Hz/3 440-480V/50-60Hz/3	200-240v/50-60Hz/3 380-415V/50-60Hz/3 440-480V/50-60Hz/3	200-240v/50-60Hz/3 380-415V/50-60Hz/3 440-480V/50-60Hz/3	200-240v/50-60Hz/3 380-415V/50-60Hz/3 440-480V/50-60Hz/3	200-240v/50-60Hz/3 380-415V/50-60Hz/3 440-480V/50-60Hz/3
1550 (61)	2105 (82 15/16)	2105 (82 15/16)	2105 (82 15/16)	2200 (86 5/8)	2345 (92 5/16)	2340 (92 1/8)
1025 (40 3/8)	1430 (56 5/16)	1430 (56 5/16)	1430 (56 5/16)	1690 (66 1/2)	1865 (73 7/16)	2000 (78 3/4)
1390 (54 3/4)	1475 (58 1/8)	1570 (61 13/16)	1750 (68 7/8)	1950 (76 3/4)	2125 (83 11/16)	2170 (85 7/16)
N/A	N/A	2350 (92 1/2)	2350 (92 1/2)	2325 (91 1/2)	2425 (95 1/2)	2425 (95 1/2)
N/A	N/A	1440 (56 11/16)	1440 (56 3/4)	1780 (70 1/16)	2080 (81 7/8)	2180 (85 13/16)
N/A	N/A	1760 (69 1/4)	1760 (69 1/4)	2150 (84 5/8)	2350 (92 1/2)	2350 (92 1/2)
495 (1092)	1190 (2623)	1560 (3439)	1630 (3594)	2640 (5820)	3170 (6989)	3480 (7672)
N/A	N/A	1850 (4079)	1930 (4255)	2800 (6173)	3360 (7408)	3650 (8047)
515 (1135)	1310 (2888)	1700 (3748)	1770 (3902)	2830 (6239)	3410 (7518)	3710 (8179)
N/A	N/A	1940 (4277)	2030 (4475)	3000 (6614)	3620 (7981)	3900 (8598)
CE, CSA	CE	CE	CE	CE	CE	CE



[www.speedqueen.com/intl](http://www.speedqueen.com/intl)

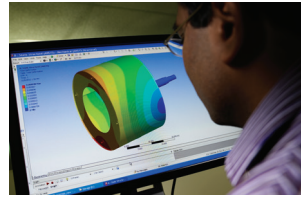


Speed Queen® is a division of Alliance Laundry Systems. Alliance is the world's leading manufacturer of commercial laundry equipment. Learn more at [alliancelaudry.com](http://alliancelaudry.com)

Speed Queen® and Quantum™ are trademarks of Alliance Laundry Systems LLC

AI14-0091

©2014 Alliance Laundry Systems LLC



## Limited Warranty - Coverage and Length\*

### COMMERCIAL AUTOMATIC TOPLOAD WASHER

This limited warranty is extended to the first owner or by warranty transfer to a new owner of an Alliance Laundry Systems commercial automatic washer. We will provide a free replacement for any of the following parts which fails as a result of a defect in material or workmanship for the period shown below from the date of original installation:

- **THREE** years (36 months) limited warranty on complete washer
- **FIVE** years (60 months) limited warranty on transmission assembly
- **FIVE** years (60 months) limited warranty on base and cabinet assembly against rust and corrosion from the inside out
- **LIFETIME** limited warranty on the stainless steel wash tub against rust and corrosion

### COMMERCIAL DRYER, STACKED DRYER, COMMERCIAL TUMBLER OR DRYING TUMBLER

This limited warranty is extended to the first owner or by warranty transfer to a new owner of an Alliance Laundry Systems commercial dryer, commercial tumbler or drying tumbler. We will provide a free replacement for any of the following parts which fails as a result of a defect in material or workmanship for the period shown below from the date of original installation:

- **THREE** years (36 months) limited warranty on complete drying tumbler
- **FIVE** years (60 months) limited warranty on base and cabinet assembly against rust and corrosion from the inside out (small dryer only)

### HORIZON FRONTLOAD WASHERS OR STACK WASHER/DRYER+

This limited warranty is extended to the first owner or by warranty transfer to a new owner of an Alliance Laundry Systems commercial frontload washer, stacked dryer or washer/dryer. We will provide a free replacement for any of the following parts which fails as a result of a defect in material or workmanship for the period shown below from the date of original installation:

- **THREE** year (36 months) limited warranty on complete frontload washer and dryer
- **FIVE** year (60 months) limited warranty on the bearings and bearing seal assembly
- **FIVE** years (60 months) limited warranty on base and cabinet assembly against rust and corrosion from the inside out
- **LIFETIME** limited warranty on the stainless steel wash basket against rust and corrosion

### COMMERCIAL WASHER-EXTRACTOR (SOFTMOUNT AND HARDMOUNT)\*

This limited warranty is extended to the first owner or by warranty transfer to a new owner of an Alliance Laundry Systems commercial frontload washer-extractor (softmount and hardmount models). We will provide a free replacement for any of the following parts which fails as a result of a defect in material or workmanship for the period shown from the date of original installation:

- **THREE** year (36 months) limited warranty on complete washer-extractor
- **FIVE** year (60 months) limited warranty for On-Premises Laundry applications (hardmount and softmount washer-extractor) on the frame, cylinder, shaft assembly, bearings and bearing seal assembly.
- **TEN** year (120 months) limited, transferable warranty for Vended (hardmount washer-extractor) on the frame, cylinder, shaft assembly, bearings and bearing seal assembly.

## Limited Warranty - Not Covered

We will not provide a replacement of any part which fails for reasons other than defective material or workmanship. This includes, but is not limited to, failure as a result of abuse, misuse, improper installation and transportation damage. We will not pay labor and transportation charges incurred in the replacement of any part. We are not responsible for any consequential and incidental damages resulting from any malfunction. Refer to warranty bond for specifications.

### HOW TO OBTAIN REPLACEMENT PARTS UNDER THIS LIMITED WARRANTY

Parts which fail within the warranty period must be ordered from your local authorized Alliance Laundry Systems parts source. To find the closest authorized company, log onto AllianceLaundry.com. Proof of purchase, model number, serial number and defective part (part return – USA only) are required in order to obtain credit.

\* See warranty bond for the details and applicable models and countries.

+ Horizon frontload washer, stacked washer/dryer, installed in On-Premises Laundry (OPL) applications are covered under a one-year (12 months) parts only warranty on entire product. Examples of OPL installations include, but are not limited to, prisons, detention centers, military bases, salons, hotels & fitness centers.