

ON-PREMISES LAUNDRY

Cylinder Heated Ironers

200 mm (8") Roll 320 mm (13") Roll
250 mm (10") Roll 502 mm (20") Roll
300 mm (12") Roll 807 mm (32") Roll

Speed Queen®



ON-PREMISES LAUNDRY CYLINDER HEATED IRONERS

| MODELS | FCS320 | FCS500 | FCS800 | FCSR500 |
|---|---|--|---|--|
| Roll Diameter - mm (in) | 320 (13) | 502 (20) | 807 (32) | 502 (20) |
| Finishing Width - mm (in) | 1664 (66), 2080 (82) | 1600 (63), 2000 (79), 2600 (102), 3200 (126) | 3186 (125) | 2000 (79), 2600 (102), 3200 (126) |
| Ironing Speed m (ft) / min | 1-6 (3-20) | 1.5-8 (5-26) | 3-15 (10-49) | 1.5-8 (5-26) |
| Ironer Dimensions (working position) | | | | |
| Width - mm (in) | 2194 (86 1/2), 2610 (102 3/4) | 2350 (92 1/2), 2750 (108 1/4), 3350 (132), 3950 (155 1/2) | 4260 (167 3/4) | 2750 (108 1/4), 3350 (132), 3950 (155 1/2) |
| Depth - mm (in) | 765 (30) | 1052 (41 1/2), 1052 (41 1/2), 1087 (42 3/4), 1087 (42 3/4) | 1915 (75 1/2) | 1528 (60 1/4) |
| Height - mm (in) | 1110 (43 3/4) | 1232 (48 1/2) | 1985 (78 1/4) | 1568 (61 3/4) |
| Roll Motor - kW (HP) | 0.18 (0.24) | 0.37 (0.50) | 0.75 (1.0) | 0.37 (0.50) |
| Other Motors - kW (HP) | - | - | - | 0.2 (0.27) |
| Roll Exhaust Motor kW (HP) | | | | |
| 50Hz | 0.095 (0.13) | 0.18 (0.24), 0.18 (0.24), 2 x 0.18 (0.24), 2 x 0.18 (0.24) | 2 x 0.55 (0.74) | 0.18 (0.24), 2 x 0.18 (0.24), 2 x 0.18 (0.24) |
| 60Hz | 0.125 (0.17) | 0.255 (0.34), 0.255 (0.34), 2 x 0.255 (0.34), 2 x 0.255 (0.34) | 2 x 0.55 (0.74) | 0.255 (0.34), 2 x 0.255 (0.34), 2 x 0.255 (0.34) |
| Roll Exhaust Duct - mm (in) | 150 (6), 150 (6) | 150 (6), 150 (6), 2 x 150 (6), 2 x 150 (6) | 2 x 120 (4 3/4) | 150 (6), 2 x 150 (6), 2 x 150 (6) |
| Front and Rear Return Feed | N/A | N/A | N/A | Standard |
| Integrated Length Folder | N/A | N/A | N/A | N/A |
| Integrated Feeder and Folder | N/A | N/A | N/A | N/A |
| Electric Heating | | | | |
| E heat input power - kW (HP) | 24.3 (32.6), 27.9 (37.4) | 32.4 (43.4), 37.2 (49.9), 54.0 (72.4), 64.8 (86.9) | 75 (100.6) | 37.2 (49.9), 54.0 (72.4), 64.8 (86.9) |
| Gas Heating | | | | |
| Maximum Gas Input - kW (BTU) | 25 (85,303), 30 (102,364) | 30 (102,364), 36 (122,837), 52 (177,431), 66 (225,201) | 110 (375,335) | 36 (122,837), 52 (177,431), 66 (225,201) |
| Gas Inlet - mm (in) | 19 (3/4) | 19 (3/4) | 25 (1) | 19 (3/4) |
| Steam Heating | | | | |
| Steam Consumption - kg/h | N/A | 36 (80), 49 (108), 68 (150), 88 (194) | 190 (419) | 49 (108), 68 (150), 88 (194) |
| Steam Inlet - mm (in) | N/A | 19 (3/4) | 25 (1) | 19 (3/4) |
| Voltage/Hz/Phase | 380-415+N/50,60Hz/3, 380-415-N/50,60Hz/3, 440V/60Hz/3, 208-240V/50,60Hz/3, 208-240V/50,60Hz/1-Gas only | 208-240/50-60/3, 380-415+N/50-60/3, 380-415/50-60/3, 440/60/3 | 208-240/50-60/3, 380-415+N/50-60/3, 380-415/50-60/3, 440/60/3 | 208-240/50-60/3, 380-415+N/50-60/3, 380-415/50-60/3, 440-480/50-60/3 |
| Shipping Dimensions | | | | |
| Type | Carton / Box | Crating | Crating | Crating |
| Height - mm (in) | 1250 (49 1/4) / 1245 (49) | 1550 (59) | 2075 (81 3/4) | 1890 (74 1/2) |
| Width - mm (in) | 2185 (86), 2600 (102 1/4) | 2485 (97 3/4), 2885 (113 1/2), 3485 (137 1/4), 4085 (160 3/4) | 4330 (170 1/2) | 2885 (113 1/2), 3485 (137 1/4), 4085 (160 3/4) |
| Depth - mm (in) | 750 (29 1/2) / 780 (30 3/4) | 1095 (43) | 1940 (76 1/2) | 1290 (50 3/4) |
| Net Weight - kg (lb) | E 435 (959) / G 410 (904), E 490 (1080) / G 465 (1025) | E 890 (1962) / S 900 (1984) / G 920 (2028), E 1020 (2249) / S 1070 (2359) / G 1150 (2535), E 1260 (2778) / S 1280 (2822) / G 1290 (2844), E 1470 (3241) / S 1540 (3395) / G 1590 (3505) | E 2610 (5754) / S 2900 (6393) / G 2480 (5467) | E 1090 (2403) / S 1140 (2513) / G 1230 (2712), E 1350 (2976) / S 1350 (2976) / G 1380 (3042), E 1490 (3285) / S 1520 (3351) / G 1580 (3483) |
| Shipping Weight - kg (lb) | E 605 (1334) / G 580 (1279) E 690 (1521) / G 665 (1466) | E 1130 (2491) / S 1140 (2513) / G 1160 (2557) E 1285 (2833) / S 1335 (2943) / G 1415 (3120) E 1580 (3483) / S 1600 (3527) / G 1610 (3549) E 1830 (4034) / S 1900 (4189) / G 1950 (4299) | E 2700 (5952) / S 3000 (6614) / G 2570 (5666) | E 1330 (2932) / S 1370 (3020) / G 1460 (3219), E 1600 (3527) / S 1600 (3527) / G 1620 (3571), E 1810 (3990) / S 1840 (4057) / G 1900 (4189) |
| Agency Approvals | CE | CE | CE | CE |

| FCSF500 | FCSR800 | FCSF800 | FCSFF500 | FCSFF800 |
|--|--|--|--|--|
| 502 (20) | 807 (32) | 807 (32) | 502 (20) | 807 (32) |
| 2000 (79), 2600 (102), 3200 (126) | 3186 (125) | 3186 (125) | 2000 (79), 2600 (102), 3200 (126) | 3186 (125) |
| 1.5-8 (5-26) | 3-15 (10-49) | 3-8 (10-26) | 1.5-8 (5-26) | N/A |
| 2750 (108 1/4), 3350 (132), 3950 (155 1/2) | 4260 (167 3/4) | 4260 (167 3/4) | 2850 (112 1/4), 3450 (135 3/4), 4050 (159 1/2) | N/A |
| 1620 (63 3/4) | 2129 (83 3/4) | 2129 (83 3/4) | 1790 (70 1/2) | N/A |
| 1568 (61 3/4) | 1970 (77 1/2) | 1970 (77 1/2) | 1760 (69 1/4) | N/A |
| 0.37 (0.50) | 0.75 (1.00) | 0.75 (1.00) | 0.37 (0.50) | N/A |
| 0.3 (0.4) | 0.3 (0.4) | 0.4 (0.54) | 0.5 (0.67) | N/A |
| 0.18 (0.24), 2 x 0.18 (0.24), 2 x 0.18 (0.24) | 2 x 0.55 (0.74) | 2 x 0.55 (0.74) | 0.18 (0.24), 2 x 0.18 (0.24), 2 x 0.18 (0.24) | 2 x 0.55 (0.74) |
| 0.255 (0.34), 2 x 0.255 (0.34), 2 x 0.255 (0.34) | 2 x 0.75 (1.00) | 2 x 0.75 (1.00) | 0.255 (0.34), 2 x 0.255 (0.34), 2 x 0.255 (0.34) | 2 x 0.55 (0.74) |
| 150 (6), 2 x 150 (6), 2 x 150 (6) | 2 x 120 (4 3/4) | 2 x 120 (4 3/4) | 150 (6), 2 x 150 (6), 2 x 150 (6) | 2 x 120 (4 3/4) |
| Option | Standard | Standard | Standard | Standard |
| Standard | N/A | Standard | Standard | Standard |
| N/A | N/A | N/A | Standard | Standard |
| 37.2 (49.9), 54.0 (72.4), 64.8 (86.9) | 75 (100.6) | 75 (100.6) | 37.2 (49.9), 54.0 (72.4 for 208-240), 70.2 (94.1 for 380-415), 64.8 (86.9) | 75 (100.6) |
| 36 (122,837), 52 (177,431), 66 (225,201) | 110 (375,335) | 110 (375,335) | 36 (122,837), 52 (177,431), 66 (225,201) | 110 (375,335) |
| 19 (3/4) | 25 (1) | 25 (1) | 19 (3/4) | 25 (1) |
| 49 (108), 68 (150), 88 (194) | 190 (419) | 190 (419) | 49 (108), 68 (150), 88 (194) | 190 (419) |
| 19 (3/4) | 25 (1) | 25 (1) | 19 (3/4) | 25 (1) |
| 208-240/50-60/3, 380-415+N/50-60/3, 380-415/50-60/3, 440-480/50-60/3 | 208-240/50-60/3, 380-415+N/50-60/3, 380-415/50-60/3, 440-480/50-60/3 | 208-240/50-60/3, 380-415+N/50-60/3, 380-415/50-60/3, 440-480/50-60/3 | 208-240/50-60/3, 380-415/50-60/3, 380-415/50-60/3 + N, 440-480/50-60/3 | 208-240/50-60/3, 380-415/50-60/3, 380-415/50-60/3 + N, 440-480/50-60/3 |
| Crating | Crating | Crating | Crating | Crating |
| 1890 (74 1/2) | 2075 (81 3/4) | 2075 (81 3/4) | 2080 (82) | N/A |
| 2885 (113 1/2), 3485 (137 1/4), 4085 (160 3/4) | 4330 (170 1/2) | 4330 (170 1/2) | 2985 (117 1/2), 3585 (141 1/4), 4185 (164 3/4) | N/A |
| 1290 (50 3/4) | 1940 (76 1/2) | 1940 (76 1/2) | 1440 (56 3/4) | N/A |
| E 1150 (2535) / S 1200 (2646) / G 1290 (2844), E 1430 (3153) / S 1430 (3153) / G 1440 (3175), E 1590 (3505) / S 1620 (3571) / G 1680 (3704) | E 2900 (6393) / S 3190 (7033) / G 2770 (6107) | E 3010 (6636) / S 3300 (7275) / G 2880 (6349) | E 1690 (3726) / S 1720 (3792) / G 1700 (3748), E 2060 (4542) / S 2100 (4630) / G 2180 (4806), E 2360 (5203) / S 2380 (5247) / G 2400 (5291) | N/A |
| E 1460 (3219) / S 1510 (3329) / G 1600 (3527) E 1785 (3935) / S 1785 (3935) / G 1795 (3935) E 1990 (4387) / S 2020 (4453) / G 2080 (4586) | E 3150 (6945) / S 3440 (7584) / G 3020 (6658) | E 3260 (7187) / S 3550 (7826) / G 3130 (6900) | E 2040 (4497) / S 2070 (4564) / G 2050 (4519) E 2460 (5423) / S 2500 (5512) / G 2580 (5688) E 2805 (6184) / S 2825 (6228) / G 2845 (6272) | N/A |
| CE | CE | CE | CE | N/A |

the tumble dryer. Amperage ratings available in Installation Manual. For the most accurate information, the installation guide should be used for all design and
Alliance Laundry Systems' Ripon facility has been registered to ISO 9001:2008.

| MODELS | IRI1000/20 | IRI1000/25 | IRI1200/20 | IRI1200/25 | IRI1400/25 | IRI1400/30 | IRI1600/30 | IRI2000/30 |
|---|-------------|-------------|-------------|-------------|---------------------|----------------------|----------------------|---------------------|
| Option A * | No | No | No | No | No | No | Yes | No |
| Option AV ** | No | No | No | No | Yes | Yes | Yes | Standard |
| Roller length - mm (in) | 1000 (40) | 1000 (40) | 1200 (47) | 1200 (47) | 1400 (55) | 1400 (55) | 1600 (64) | 2000 (79) |
| Roller diameter - mm (in) | 200 (8) | 250 (10) | 200 (8) | 250 (10) | 250 (10) | 300 (12) | 300 (12) | 300 (12) |
| Roller Ironing speed - m/min (ft/min) | 3,3 (10.8) | 3,8 (12.5) | 3,3 (10.8) | 3,8 (12.5) | 3,8 (12.5) | 2,7 / 4,3 (8.9/14.1) | 2,7 / 4,3 (8.9/14.1) | 1-5 (3.3-16.4) |
| | | | | | 1-5*** (3.3-16.4) | 1-5*** (3.3-16.4) | 1-5*** (3.3-16.4) | |
| Linen return | Front | Front | Front | Front | Front | Front | Front | Front |
| Hourly output - kg/h (lb/h) | 20 (44) | 25 (55) | 25 (55) | 30 (66) | 35 (77) | 40 (88) | 50 (110) | 60 (132) |
| Residual moisture (%) | 15 | 15-20 | 15 | 15-20 | 15-20 | 25 | 25 | 25 |
| Steam extraction - m ³ /h (ft ³ /h) | - | - | - | - | 80 (2825) | 80 (2825) | 80 (2825) | 80 (2825) |
| Diameter exhaust - mm (in) | - | - | - | - | 70 x 55 (2.8 x 2.2) | 70 x 55 (2.8 x 2.2) | 70 x 55 (2.8 x 2.2) | 70 x 55 (2.8 x 2.2) |
| Heating power - kW (HP) | 3,6 (4.83) | 6 (8.05) | 4 (5.36) | 6,9 (9.25) | 7,5 (10.06) | 9,9 (13.28) | 11,4 (15.29) | 15 (20.12) |
| Total power - kW (HP) | 3,78 (5.07) | 6,18 (8.29) | 4,18 (5.61) | 7,08 (9.49) | 7,68 (10.3) | 11 (14.75) | 12,5 (16.76) | 16,1 (21.59) |

Voltage/Hz/Phase Circuit Breaker

| | | | | | | | | | |
|--|-------------|---------------|---------------|---------------|---------------|---------------|---------------|---------------|----------------|
| Electric 230V/50Hz/3 | 16 A | 20 A | 16 A | 25 A | 25 A | 40 A | 40 A | 50 A | |
| Electric 230V/60Hz/3 | 16 A | 20 A | 16 A | 25 A | 25 A | 40 A | 40 A | 50 A | |
| Electric 400V/50Hz/3+N | 16 A | 16 A | 16 A | 16 A | 16 A | 25 A | 25 A | 25 A | |
| Electric 400V/60Hz/3+N | 16 A | 16 A | 16 A | 16 A | 16 A | 25 A | 25 A | 25 A | |
| Electric 400V/60Hz/3 (no N) | 16 A | 16 A | 16 A | 16 A | 16 A | 25 A | 25 A | 25 A | |
| Dimensions - mm (in) | H | 993 (39) | 1003 (39 1/2) | 993 (39) | 1003 (39 1/2) | 1003 (39 1/2) | 1073 (42 1/4) | 1073 (42 1/4) | 1073 (42 1/4) |
| | W | 1305 (51 1/2) | 1440 (56 3/4) | 1505 (59 1/4) | 1640 (64 1/2) | 1840 (72 1/2) | 1890 (74 1/2) | 2090 (82 1/4) | 2490 (98) |
| | D | 420 (16 1/2) | 420 (16 1/2) | 420 (16 1/2) | 420 (16 1/2) | 420 (16 1/2) | 552 (21 3/4) | 552 (21 3/4) | 552 (21 3/4) |
| Packing dimensions - mm (in) | H | 1120 (44) | 1160 (45 3/4) | 1120 (44) | 1160 (45 3/4) | 1160 (45 3/4) | 1260 (49 1/2) | 1260 (49 1/2) | 1350 (53) |
| | W | 1450 (57) | 1650 (65) | 1650 (65) | 1850 (72 3/4) | 2050 (80 3/4) | 2100 (82 3/4) | 2300 (90 1/2) | 2700 (106 1/4) |
| | D | 550 (21 3/4) | 550 (21 3/4) | 550 (21 3/4) | 550 (21 3/4) | 550 (21 3/4) | 660 (26) | 660 (26) | 660 (26) |
| Volume packing - m ³ (ft ³) | 0,88 (31.1) | 1,02 (36) | 1,02 (36) | 1,18 (41.7) | 1,31 (46.3) | 1,75 (61.8) | 1,91 (67.5) | 2,41 (85.1) | |
| Weight - kg (lb) | Net | 74 (163) | 94 (207) | 80,5 (177) | 100 (220) | 106 (234) | 209 (461) | 221 (487) | 243 (536) |
| | Ship | 85.5 (188) | 119 (262) | 93 (205) | 124 (273) | 128 (282) | 232 (511) | 245 (540) | 271 (597) |

* Option A = steam extraction

** Option AV = frequency inverter + steam extraction

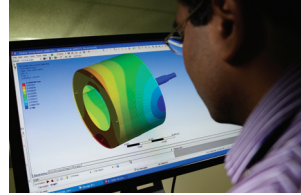
*** Ironing speed for models with option AV

See your Speed Queen distributor for specifications. For further details on installation, refer to Installation, Operation and Maintenance instructions supplied with the tumble dryer. Amperage ratings available in Installation Manual. For the most accurate information, the installation guide should be used for all design and construction purposes. Due to continuous product improvements, design and specifications subject to change without notice. The quality management system of Alliance Laundry Systems' Czech facility has been registered to ISO 14001:2005 and 9001:2009.

Printed in the U.S.A.

speedqueen.com/intl





Limited Warranty - Coverage and Length*

COMMERCIAL AUTOMATIC TOPLOAD WASHER

This limited warranty is extended to the first owner or by warranty transfer to a new owner of an Alliance Laundry Systems commercial automatic washer. We will provide a free replacement for any of the following parts which fails as a result of a defect in material or workmanship for the period shown below from the date of original installation:

- **THREE** years (36 months) limited warranty on complete washer
- **FIVE** years (60 months) limited warranty on transmission assembly
- **FIVE** years (60 months) limited warranty on base and cabinet assembly against rust and corrosion from the inside out
- **LIFETIME** limited warranty on the stainless steel wash tub against rust and corrosion

COMMERCIAL DRYER, STACKED DRYER, COMMERCIAL TUMBLER OR DRYING TUMBLER

This limited warranty is extended to the first owner or by warranty transfer to a new owner of an Alliance Laundry Systems commercial dryer, commercial tumbler or drying tumbler. We will provide a free replacement for any of the following parts which fails as a result of a defect in material or workmanship for the period shown below from the date of original installation:

- **THREE** years (36 months) limited warranty on complete drying tumbler
- **FIVE** years (60 months) limited warranty on base and cabinet assembly against rust and corrosion from the inside out (small dryer only)

HORIZON FRONTLOAD WASHERS OR STACK WASHER/DRYER+

This limited warranty is extended to the first owner or by warranty transfer to a new owner of an Alliance Laundry Systems commercial frontload washer, stacked dryer or washer/dryer. We will provide a free replacement for any of the following parts which fails as a result of a defect in material or workmanship for the period shown below from the date of original installation:

- **THREE** year (36 months) limited warranty on complete frontload washer and dryer
- **FIVE** year (60 months) limited warranty on the bearings and bearing seal assembly
- **FIVE** years (60 months) limited warranty on base and cabinet assembly against rust and corrosion from the inside out
- **LIFETIME** limited warranty on the stainless steel wash basket against rust and corrosion

COMMERCIAL WASHER-EXTRACTOR (SOFTMOUNT AND HARDMOUNT)*

This limited warranty is extended to the first owner or by warranty transfer to a new owner of an Alliance Laundry Systems commercial frontload washer-extractor (softmount and hardmount models). We will provide a free replacement for any of the following parts which fails as a result of a defect in material or workmanship for the period shown from the date of original installation:

- **THREE** year (36 months) limited warranty on complete washer-extractor
- **FIVE** year (60 months) limited warranty for On-Premises Laundry applications (hardmount and softmount washer-extractor) on the frame, cylinder, shaft assembly, bearings and bearing seal assembly.
- **TEN** year (120 months) limited, transferable warranty for Vended (hardmount washer-extractor) on the frame, cylinder, shaft assembly, bearings and bearings seal assembly.

Limited Warranty - Not Covered

We will not provide a replacement of any part which fails for reasons other than defective material or workmanship. This includes, but is not limited to, failure as a result of abuse, misuse, improper installation and transportation damage. We will not pay labor and transportation charges incurred in the replacement of any part. We are not responsible for any consequential and incidental damages resulting from any malfunction. Refer to warranty bond for specifications.

HOW TO OBTAIN REPLACEMENT PARTS UNDER THIS LIMITED WARRANTY

Parts which fail within the warranty period must be ordered from your local authorized Alliance Laundry Systems parts source. To find the closest authorized company, log onto AllianceLaundry.com. Proof of purchase, model number, serial number and defective part (part return – USA only) are required in order to obtain credit.

* See warranty bond for the details and applicable models and countries.

+ Horizon frontload washer, stacked washer/dryer, installed in On-Premises Laundry (OPL) applications are covered under a one-year (12 months) parts only warranty on entire product. Examples of OPL installations include, but are not limited to, prisons, detention centers, military bases, salons, hotels & fitness centers.