



ON PREMISE TUMBLE DRYERS



GAS



ELECTRIC



STEAM

SA050 TUMBLE DRYER 50LB – SA075 TUMBLE DRYER 75LB – SA120 TUMBLE DRYER 120LB
SA170 TUMBLE DRYER 170LB – SA200 TUMBLE DRYER 200LB





OPT

OVER-DRY PREVENTION TECHNOLOGY



C.A.R.E.

COMBUSTION AUTO RESPONSE EQUIPPED

THE BEST IN CLASS JUST GOT BETTER

For more than a century, Speed Queen has been at the forefront of the industry, building our legacy by providing equipment that stands up to any commercial laundry challenge.

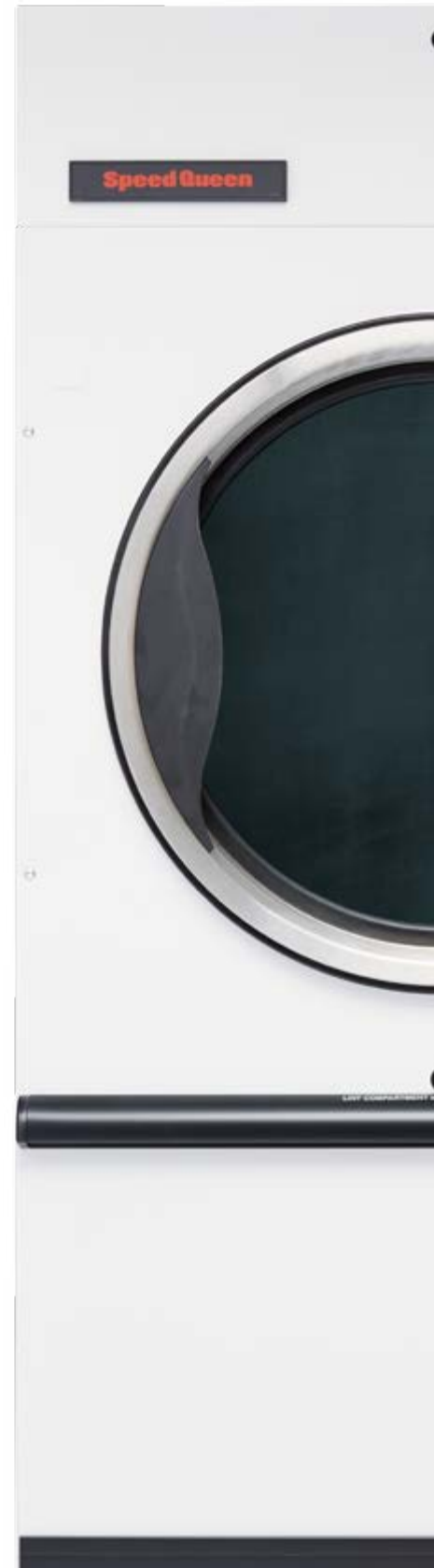
We make no compromises in performance and refuse to be outdone in reliability and efficiency. And our commitment to quality is only matched by our commitment to your success, delivering you the most profitable machines in the industry, bar none.

Unlike some competitors, Speed Queen machines are built specifically for the commercial environment; we use metal where others use plastic and our world-class test lab rigorously pushes our products far beyond the conditions they'll face in the field.

For commercial laundry equipment designed for use in fire stations, aged care facilities, hotels, correctional facilities, spas, hair salons, sporting organisations or any other industry application, you can rely on the tried, tested and proven performance of Speed Queen, to make your life simpler and more productive.

With industry leading manufacturing in the USA, designs refined for more than a century and machines built to last, Speed Queen Laundry equipment represents a secure investment for your on premise laundry facility.

 **MADE IN AMERICA, BUILT TO LAST SINCE 1908**



30



PROGRAMMABLE CYCLES



EASY MAINTENANCE



DEDICATED TO A HIGHER STANDARD

Uncomplicated. Uncompromising. Unmatched. Enjoy heavy-duty construction that will provide reliable operation for years to come.

Our single pocket tumble dryers feature a concentrated airflow pattern and sealed cylinder rims to ensure maximum air utilisation and energy savings. This superior drying performance helps laundries maximise throughput to meet the daily workload without the need for added shifts or costly overtime.

Our tumble dryers are designed with fewer moving parts, so that you'll face fewer maintenance problems and less wear and tear. We make it even easier with a large, easy-to-clean lint compartment and a heavy-duty door hinge designed to withstand heavy usage.

QUANTUM™ SYSTEM

The on premise laundry business is changing. Managers today must be flexible enough to adapt quickly to changes to linen processing formulas, while keeping operating costs within budget. Features that a few years ago were considered luxuries are now essential components to doing business.

Speed Queen's cutting-edge Quantum System gives managers the power to respond instantly to changes in order to produce superior results. Programming ease and user-friendly operation ensure our technology makes your life easier, not more complicated.

QUANTUM GOLD CONTROL

Quantum Gold offers operators the pinnacle in flexibility with a total of 30 programmable cycles, including an expendable end of cycle tumble to reduce creasing and the risk of fire.

Managers can easily program their tumbler with the aid of a PC or network the machines, and then connect through their business network, cable or direct from PC. Machine audit data can also be downloaded from this port.

OVER-DRY PREVENTION TECHNOLOGY (OPT)

Reduce linen, labour and utility costs with the precise drying performance of OPT. Don't waste time, or pay unnecessary charges for over-drying linen.

C.A.R.E.

The Combustion Auto Response Equipped (C.A.R.E) system alerts you to abnormally high temperatures such as from a fire in the cylinder and automatically sprays water in the cylinder to cool it down if necessary.



MADE IN AMERICA, BUILT TO LAST SINCE 1908



RADIAL DRYING SYSTEM

Radial Drying system features a concentrated airflow pattern and sealed cylinder rims to ensure maximum air utilization and energy savings.

DUAL DIGITAL CONTROL

For operations requiring basic versatility, dual digital control comes with four cycle selections. The dual digital control also boasts a digital display with cycle time countdown, a feature most of our competition don't offer.

UNMATCHED RELIABILITY

Quality construction for reliable performance that is backed with a 3 year part warranty.

REVERSING CYLINDER*

*Where available

Ensures even drying and prevents tangles for easy removal of loads.

EASY MAINTENANCE

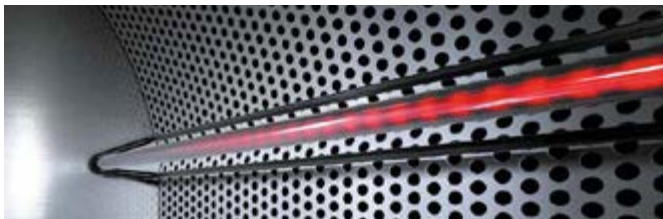
Large, easy to clean lint compartment simplifies clean-up. Self diagnostic controls make it easier to trouble shoot and allow technicians to identify and quickly repair faults, meaning less down time.

CHOICE OF HEAT

Choice of GAS, STEAM or ELECTRIC heating options allow owners to choose the best balance of speed and utilities savings. Gives flexibility and choice to the owner's operation.

INTRODUCING OVER-DRY PREVENTION TECHNOLOGY

OPT is an industry-exclusive, cutting-edge innovation that connects sensors located within the lifters to our revolutionary rotary transfer switch to offer unmatched levels of accuracy. The result is a pinpoint dryness reading throughout the entire load, eliminating costs associated with over-drying.



CUTTING-EDGE DESIGN

Our revolutionary rotary transfer switch enables the system to sense dryness levels thousands of times per second for ultra-accurate readings.

SENSING SURFACE

Models offer up to 267 times more surface area for sensing than some competitors.

MAINTENANCE FREE

Our industry-exclusive rotary transfer switch doesn't require brushes or hard contact, giving you maintenance-free, reliable performance.

NO MORE JUDGMENT CALLS

Dryer stops automatically when desired dryness level is reached, preventing staff from making educated guesses.

STEP DRY

Enables you to use high heat until the load is half dry, then lower the temperature for the remainder of the cycle until you have reached your specified dryness level.

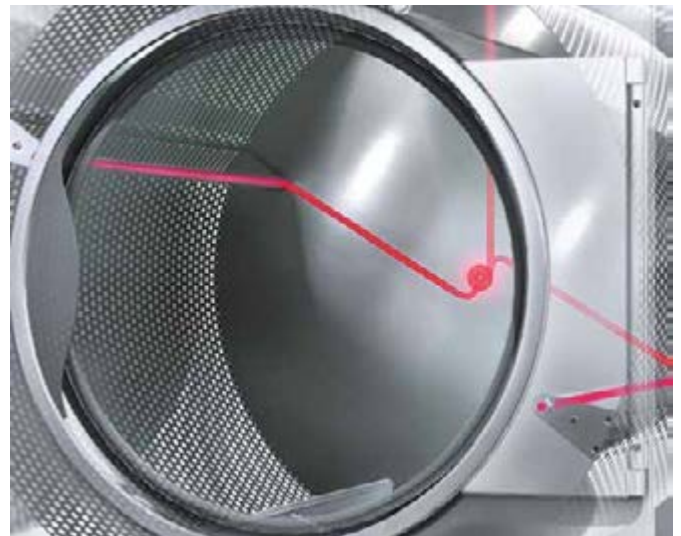
DRYNESS LEVEL SETTINGS

Levels ranging from 0 to 40 percent allow you to define each cycle according to your specific needs.



GET MORE LIFE OUT OF YOUR LINENS

Over-drying your linens causes them to become prematurely tattered and worn. According to the results of a study undertaken in our industry-leading test lab, linens experience **31 PERCENT LESS FIBRE LOSS** when over-drying is eliminated.



REDUCE UTILITY COSTS

When a load reaches its preset level of dryness, OPT automatically stops your tumbler. This feature can translate into utility savings up to thousands of dollars annually.

MINIMISE LABOUR COSTS

Your tumblers dictate the pace of your laundry facility. With OPT, the drying time of each load is reduced. The result is maximised throughput per labour hour and savings of thousands of dollars per year.

THE SPEED QUEEN DIFFERENCE

Speed Queen has been recognised around the world as the leading manufacturer of commercial laundry equipment. We produce, sell and support more commercial washers and dryers world wide than any other company. Our products are renowned for their durability, innovative features, efficient performance and lowest cost of ownership.

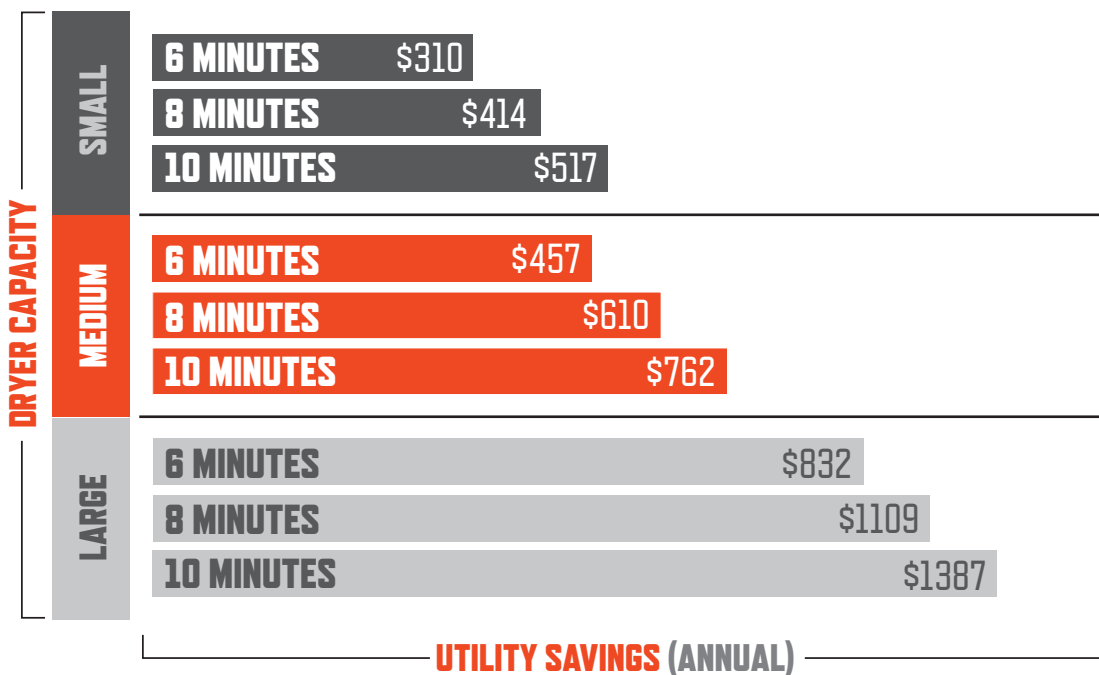
FEATURES & BENEFITS

- Multi programmable, high volume dryer.
- Energy saving with OPT and Automatic Drying functions to prevent over drying.
- Reversing cylinder helps prevent tangled linen.
- Microprocessor control allowing easy programming to suit the individual laundry or load application.



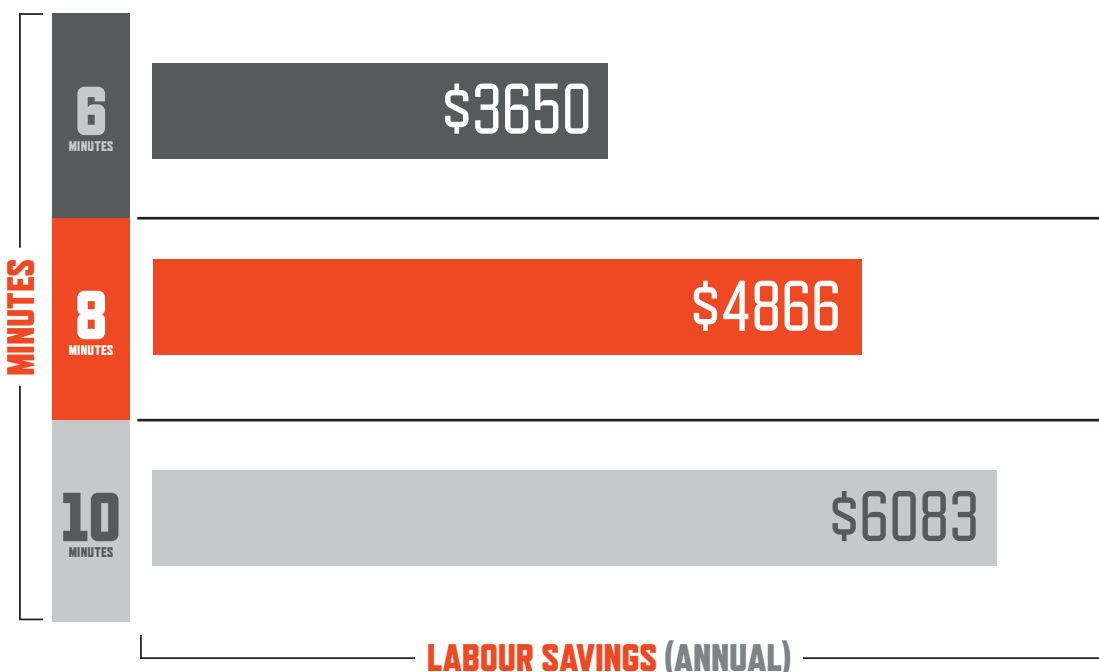
THE COST OF OVER-DRYING

UTILITIES



Dollar amounts are from USA and European studies and are indicative only.

LABOUR



Dollar amounts are from USA and European studies and are indicative only.

ON-PREMISES LAUNDRY

Classic-Line Tumble Dryers and Stack Tumble Dryers

11.3 kg (25 lb) Tumble Dryer
13.6 kg (30 lb) Tumble Dryer
15.9 kg (35 lb) Tumble Dryer
22.7 kg (50 lb) Tumble Dryer
24.9 kg (55 lb) Tumble Dryer
34.0 kg (75 lb) Tumble Dryer

54.4 kg (120 lb) Tumble Dryer
77.1 kg (170 lb) Tumble Dryer
91.0 kg (200 lb) Tumble Dryer
2 x 13.6 kg (30 lb) Stack Tumble Dryer
2 x 20.4 kg (45 lb) Stack Tumble Dryer

Speed Queen®



ON-PREMISES LAUNDRY CLASSIC-LINE TUMBLE DRYERS 11.3-91.0 KG – QUANTUM GOLD™ AND DUAL DIGITAL TIMER CONTROLS

MODELS	STT30	STT45	STO25	STO30	STO35	STO50	STO55	STO75	STI120	STI170	ST200
Control Option	Quantum Gold, Dual Digital Timer										
Dry Weight Capacity – kg (lb)	2 x 13.6 (30)	2 x 20.4 (45)	11.3 (25)	13.6 (30)	15.9 (35)	22.7 (50)	24.9 (55)	34.0 (75)	54.4 (120)	77.1 (170)	91.0 (200)
Cylinder Size – mm (in) (diameter x depth)	762 x 660 (30 x 26)	838 x 762 (33 x 30)	673 x 610 (26 1/2 x 24)	673 x 762 (26 1/2 x 30)	762 x 762 (30 x 30)	940 x 762 (37 x 30)	838 x 889 (33 x 35)	940 x 914 (37 x 36)	1118 x 1041 (44 x 41)	1289 x 1080 (50 3/4 x 42 1/2)	1289 x 1270 (50 3/4 x 50)
Cylinder Volume – liters (cu. ft.)	301 (10.6)	421 (14.8)	217 (7.7)	271 (9.6)	347 (12.3)	528 (18.6)	491 (17.3)	634 (22.4)	1021 (36.1)	1408 (49.7)	1656 (58.5)
Width – mm (in)	800 (31 1/2)	876 (34 1/2)	711 (28)	711 (28)	800 (31 1/2)	981 (38 5/8)	876 (34 1/2)	981 (38 5/8)	1178 (46 3/8)	1349 (53 1/8)	1349 (53 1/8)
Depth – mm (in)	1086 (42 7/8)	1235 (48 5/8)	1038 (40 7/8)	1191 (46 7/8)	1191 (46 7/8)	1226 (48 1/4)	1365 (53 5/8)	1378 (54 1/4)	1725 (67 5/8)	1749 (68 5/8)	1939 (76 3/8)
Height – mm (in)	1937 (76 1/4)	2064 (81 1/4)	1622 (63 7/8)	1622 (63 7/8)	1622 (63 7/8)	1946 (76 5/8)	1695 (66 3/4)	1946 (76 5/8)	2177 (85 45/64)	2388 (94)	2388 (94)
Motor – W (HP)	2 x 187 (1/4)	2 x 373 (1/2)	187 (1/4)	187 (1/4)	187 (1/4)	Non Rev. 373 (1/2) Reversing (Cyl and Fan): 249 (1/3)	373 (1/2)	Non Rev. 560 (3/4) Reversing (Cyl and Fan): 249 (1/3)	746 (1), 560 (3/4)	2237 (3), 560 (3/4)	2237 (3), 560 (3/4)
Air Outlet Diameter – mm (in)	1 x 203 (8)	1 x 254 (10)	152 (6)	152 (6)	203 (8)	203 (8)	203 (8)	203 (8)	254 (10)	300 (12)	300 (12)
Airflow – liters/sec (cfm) 60 Hz 50 Hz	189 (400) 160 (340)	283 (600) 236 (500)	236 (500) 203 (430)	236 (500) 203 (430)	307 (650) 260 (550)	354 (750) 354 (750)	330 (700) 283 (600)	434 (920)* 354 (750)	755 (1600) 755 (1600)	1156 (2450) 1156 (2450)	1156 (2450) 1156 (2450)
Reversing Cylinder	Not available	Not available	Option	Option	Option	Option	Option	Option	Standard	Standard	Standard
Water Inlet Size (C.A.R.E. System)	N/A	N/A	(1) 3/4"- 11 1/2" NH Hose Conn.	(1) 3/4"- 11 1/2" NH Hose Conn.	(1) 3/4"- 11 1/2" NH Hose Conn.	(1) 3/4"- 11 1/2" NH Hose Conn.	(1) 3/4"- 11 1/2" NH Hose Conn.	(1) 3/4"- 11 1/2" NH Hose Conn.	(1) 3/4"- 11 1/2" NH Hose Conn.	(1) 3/4"- 11 1/2" NH Hose Conn.	(1) 3/4"- 11 1/2" NH Hose Conn.
Plumbing Connection – mm (in) Gas Models – Steam Models –	13 NPT (1/2) 19 NPT (3/4)	13 NPT (1/2) N/A	13 NPT (1/2) 19 NPT (3/4)	13 NPT (1/2) 19 NPT (3/4)	13 NPT (1/2) 19 NPT (3/4)	13 NPT (1/2) 19 NPT (3/4)	13 NPT (1/2) 19 NPT (3/4)	13 NPT (1/2) 19 NPT (3/4)	inlet/outlet 25.4 NPT (1) 19 NPT (3/4)	inlet/outlet 25.4 NPT (1) 19 NPT (3/4)	inlet/outlet 25.4 NPT (1) 19 NPT (3/4)
Energy Data											
Gas 60 Hz - kW (Btu/hr) per pckt	21.4 (73K)	27.8 (95K)	18.7 (64K)	21.4 (73K)	26.4 (90K)	38.1 (130K)	32.8 (112K)	48.3 (165K)	7.9 (270K)	115.7 (395K)	124.6 (425K)
Gas 50 Hz - kW (Btu/hr) per pckt	21.4 (73K)	25.5 (87K)	18.7 (64K)	21.4 (73K)	26.4 (90K)		29.9 (102K)				
Electric	21 kW	NA	12 kW	21 kW	24 kW	30 kW	27 kW	30 kW	60kW	N/A	N/A
Steam @ 100psi (6.9 bar) - kW (Btu/hr)	3.2 BHP 32.5 (111K)	NA	3.9 BHP 39.6 (135K)	3.9 BHP 39.6 (135K)	4.8 BHP 48.6 (166K)	5.1 BHP 52.0 (178K)	NA	6.1 BHP 61.6 (210K)	11.7 BHP 118.5 (405K)	18.8 BHP 189.7 (648K)	18.8 BHP 189.7 (648K)
Steam @ 15 psi (1.0 bar) - kW (Btu/hr)	2.2 BHP 21.7 (74K)		2.6 BHP 26.4 (90K)	2.6 BHP 26.4 (90K)	3.7 BHP 37.8 (129K)	3.4 BHP 34.8 (119K)		4.1 BHP 41.2 (141K)	7.9 BHP 79.7 (272K)	12.6 BHP 126.9 (433K)	12.6 BHP 126.9 (433K)
Available Voltages Gas and Steam Models –	Non Rev Amps (both pockets)	Non Rev Amps (both pockets)	Non Rev Amps, (Rev Amps)	Non Rev Amps, (Rev Amps)	Non Rev Amps, (Rev Amps)	Non Rev Amps, (Rev Amps)	Non Rev Amps, (Rev Amps)	Non Rev Amps, (Rev Amps)	Non Rev Amps, (Rev Amps)	Non Rev Amps, (Rev Amps)	Non Rev Amps, (Rev Amps)
100/200-220/60/1 200/60/1	22.0/11.6 total	11.2 total	11.0/5.8 (11.0/5.8)	11.0/5.8 (11.0/5.8)	11.0/5.8 (11.0/5.8)	11.0/5.8 (11.0/5.8)		9.8/4.9 (9.8/4.9)			
120/208-240/60/1 120/60/1	16.0/8.0 total		12.0/6.7 (12.0/6.7)	12.0/6.7 (12.0/6.7)	12.0/6.7 (12.0/6.7)	(12/6.5) 9.3	9.2/6.5 (9.2/6.5)	(13/7) 13.8			
200-208/240/60/1 208-240/60/1		12.0 total				5.1/5.1		7.6/7.6			
200-208/240/60/3 380/60/3	6.4/6.4 total 3.0 total	9.6/9.6 total	3.2/3.2 (4.0/4.0) 1.5 (2.0)	3.2/3.2 (4.0/4.0) 1.5 (2.0)	3.2/3.2 (4.0/4.0) 1.5 (2.0)	2.8/2.8 (4.0/4.0) 1.6 (2.0) 1.4 (1.9)	4.0/3.9 (4.0/4.5)	3.8/3.8 (4.3/4.3) 1.8 (2.1) 1.9 (2.1) 1.9 (2.1)	(7.7) 4.1 (3.8) (3.9)	(13.5) 6.6 (6.4) (6.7)	14.0 7.0 7.0
STEAM ONLY 440/60/3 460-480/60/3 100/200/50/1 200/50/1	3.3 total 24.2/15.0 total	11.2 total 10.8 total	1.6 (2.0) 12.1/7.5	1.6 (2.0) 12.1/7.5	1.6 (2.0) 12.1/7.5	1.4 (1.9) 1.4 (1.9)		10.0/6.2			
230-240/50/1 200/50/3	9.0 total 5.8 total		7.5 2.9 (3.5)	7.5 2.9 (3.5)	7.5 2.9 (3.5)	6.3 (6.9) 3.3 (4.2)	5.5	6.7 (7.0) 3.5 (4.5) 3.5 (4.9)			
230-240/50/3 230/50/3 380/50/3	7.0 total		3.5 N/A	3.5 N/A	3.5 N/A	3.1 (4.3)			7.3	TBD	
400-415/50/3 380/400-415/50/3	3.0/3.2 total		1.5/1.6 (2.0/2.0)	1.5/1.6 (2.0/2.0)	1.5/1.6 (2.0/2.0)	1.6/1.6 (2.0/2.0)	2.0 (2.5) 2.0 (2.5)	1.8/1.8 (2.1/2.1)	(3.8)	(6.9)	8.0
Electric –											
208/60/1 240/60/1 200/60/1	108x2-216 total		64 57 64	108 94 108	122 107 122		129 115 125			64	108
200-208/60/3 240/60/3 380/60/3	62x2-124 total 54x2-108 total 33x2-66 total		37 (37) 33 (33) 20 (20)	62 (62) 54 (54) 33 (33)	71 (71) 62 (62) 38 (38)	89 (88) 79 (78) 47 (48)	79 (79) 65 (65)	89 (88) 79 (78) 47 (48) 41 (41)		152.0 94.5	
460-480/60/3 480/60/3 200/50/1	29x2-56 total 27x2-54 total		16 (16)	27 (27)	31 (31)	38 (38)		38 (38)	76.1		
230-240/50/1 240/50/1 (21 kW heater only)			63 58	105 95	119 108		131 119				
200/50/3 230-240/50/3	60x2-120 total 55x2-110 total		36 (36) 33 (33)	60 (60) 55 (55)	65 (65) 62 (62)	84 (85)		84 (85)			
230/50/3 240/50/3						73 (75) 79 (78)		73 (75) 79 (78)			
380/50/3 400-415/50/3	33x2-66 total 31x2-62 total		20 (20) 18 (18)	33 (33) 31 (31)	38 (38) 35 (35)	47 (48) 43 (44)	43 (43) 38 (38)	47 (48) 43 (44)	94.5 87.0		
Net Weight (Gas & Elec.) - kg (lb)	247 (544)	305 (673)	137 (300)	150 (330)	163 (360)	247 (545)	197 (435)	279 (615)	578 (1275)	716 (1575)	774 (1707)
Net Weight (Steam) - kg (lb)	247 (544)	305 (673)	137 (300)	150 (330)	163 (360)	247 (545)	197 (435)	279 (615)	624 (1375)	761 (1675)	820 (1807)
Ship Weight (Gas & Elec.) - kg (lb)	264 (582)	326 (718)	151 (332)	165 (364)	179 (394)	273 (602)	216 (476)	307 (677)	607 (1338)	756 (1667)	779 (1718)
Ship Weight (Steam) - kg (lb)	264 (582)	326 (718)	151 (332)	165 (364)	179 (394)	273 (602)	216 (476)	307 (677)	656 (1446)	806 (1776)	825 (1885)
Agency Approvals	16,920 FJD	20,378 FJD	7,411 FJD	8354	8640	9152	9473	10120	21580	30461	43844

* On Model 075 Tumbler, 60 Hz, Electric Heated: Airflow = 750 cfm (1274 m3/hr)

For the most accurate information, the installation guide should be used for all design and construction purposes. Due to continuous product improvements, design and specifications are subject to change without notice. The quality management system of Alliance Laundry Systems' Ripon facility has been registered to ISO 9001:2008.

Printed in the U.S.A.

speedqueen.com/intl



Speed Queen®



Speed Queen

COMMERCIAL LAUNDRY EQUIPMENT

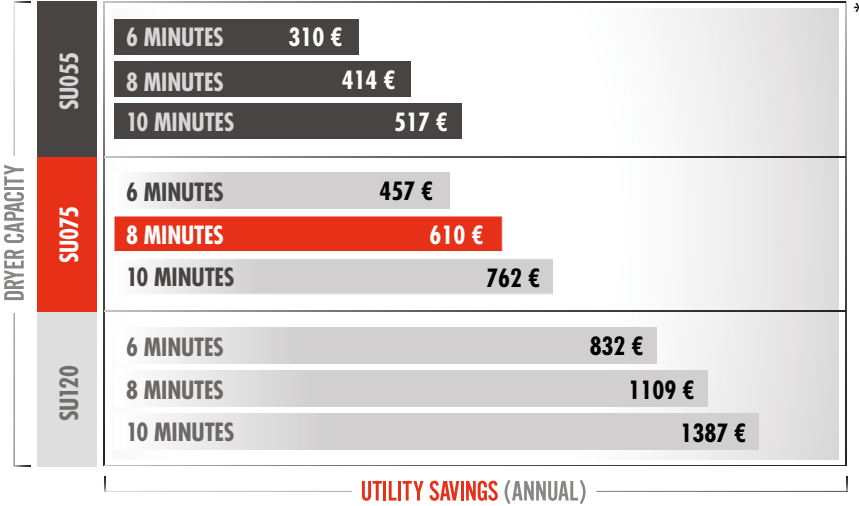
OVER-DRY
PREVENTION
TECHNOLOGY.



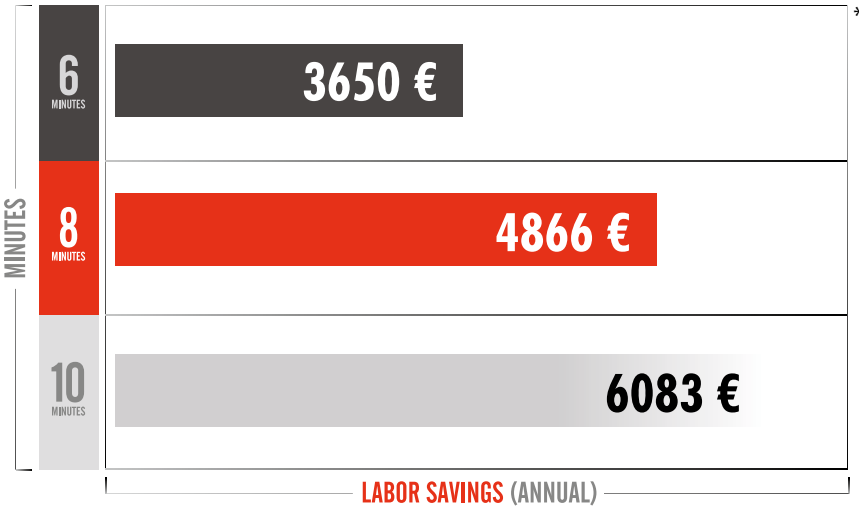
IS OVER-DRYING COSTING YOU THOUSANDS?

In a recent survey of commercial laundry distributors and commercial laundry managers, 79 percent of respondents believe on-premises laundries over-dry by more than eight minutes per cycle. OPT reduces utility and labor expenses and extends linen life by eliminating over-drying. As the charts below illustrate, that adds up to some serious savings.

THE COST OF OVER-DRYING: UTILITIES



THE COST OF OVER-DRYING: LABOR



* Based on 10 loads/day, 7 days/week and 0,7€ per 100.000 BTU
 ** Based on 7 days/week and 10€/employee hour

INTRODUCING OVER-DRY PREVENTION TECHNOLOGY

OPT is an industry-exclusive, cutting-edge innovation that connects sensors located within the lifters to our revolutionary rotary transfer switch to offer unmatched levels of accuracy. The result is a pinpoint dryness reading throughout the entire load, eliminating costs associated with over-drying.

OPT

CUTTING-EDGE DESIGN

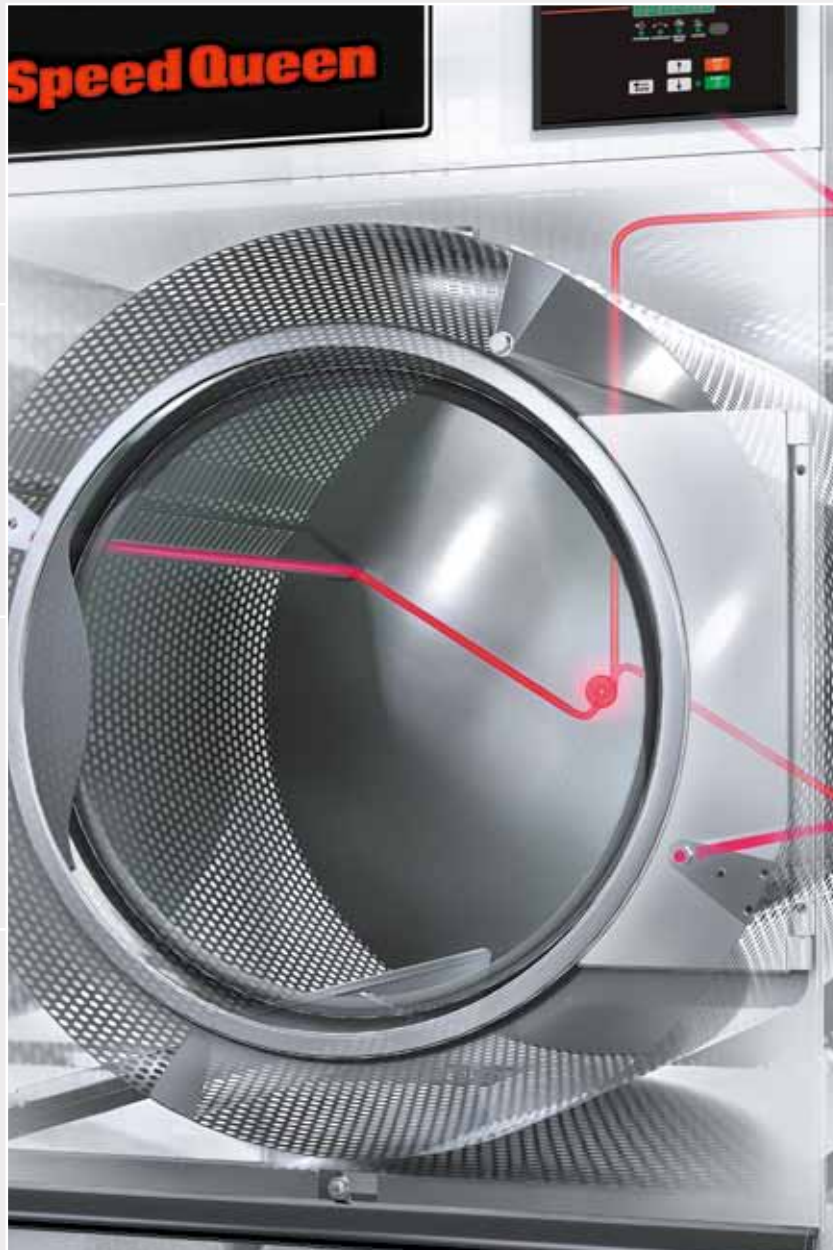
Our revolutionary rotary transfer switch enables the system to sense dryness levels thousands of times per second for ultra-accurate readings.

SENSING SURFACE

The SU075 tumbler offers up to 267 times more surface area for sensing than some competitors.

MAINTENANCE FREE

Our industry-exclusive rotary transfer switch doesn't require brushes or hard contact, giving you maintenance-free, reliable performance.



NO MORE JUDGMENT CALLS

Dryer stops automatically when desired dryness level is reached, preventing staff from making educated guesses.

STEP DRY

Enables you to use high heat until the load is half dry, then lower the temperature for the remainder of the cycle until you have reached your specified dryness level.

DRYNESS LEVEL SETTINGS

Levels ranging from 0 to 40 percent allow you to define each cycle according to your specific needs.

100% RETURN ON INVESTMENT – AND THEN SOME

REDUCE UTILITY COSTS

When a load reaches its preset level of dryness, OPT automatically stops your tumbler. This feature can translate into utility savings up to thousands of euros annually.

MINIMIZE LABOR COSTS

Your tumblers dictate the pace of your laundry facility. With OPT, the drying time of each load is reduced. The result is maximized throughput per labor hour and jaw-dropping savings of thousands of euros per year.



GET MORE LIFE OUT OF YOUR LINENS

Over-drying your linens causes them to become prematurely tattered and worn. According to the results of a study done in our industry-leading test lab, linens experience **31 PERCENT LESS FIBER LOSS** when over-drying is eliminated.

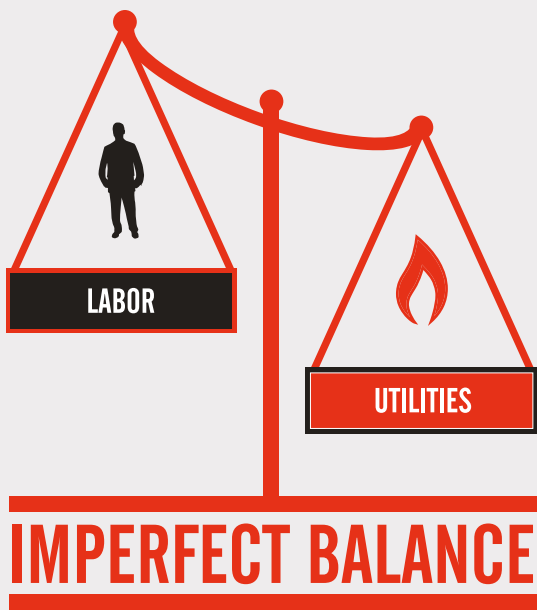
THE SPEED QUEEN DIFFERENCE

Speed Queen has been recognized around the world as the leading manufacturer of commercial laundry equipment. We produce, sell and support more commercial washers and dryers in North America than any other company. Our products are renowned for their durability, innovative features, efficient performance and lowest cost of ownership.

Speed Queen

REALIZE TRUE EFFICIENCY – AND TRUE SAVINGS

Drying efficiency is often defined with terms like “gas usage” and “input Btus.” But simply reducing utilities doesn’t address your most significant expense — labor. In fact, the average laundry facility spends ten times as much on labor costs as they do on drying utilities. That’s why Speed Queen machines are expertly designed to provide the ultimate balance of utilities and labor for true, optimized efficiency. And OPT is the latest development in our commitment to offering the lowest cost of ownership in the market. Because we’re not only serious about laundry — we’re serious about your success.



EFFICIENCY IS NOT just about reducing Btus. Decreasing utilities increases dry time and overall labor costs.



EFFICIENCY IS the perfect balance between utility consumption and dry time, avoiding unnecessary labor costs.

Speed Queen

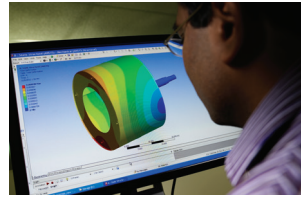
COMMERCIAL LAUNDRY EQUIPMENT

Alliance International bvba
Nieuwstraat 146
B-8560 Wevelgem
Belgium

T +32 56 41 20 54
F +32 56 41 86 74
M info@alliances.eu



Due to continuous product improvements, design and specifications subject to change without notice.
For more detailed technical information, please visit the 'Worldwide' section at www.speedqueen.com



Limited Warranty - Coverage and Length*

COMMERCIAL AUTOMATIC TOPLOAD WASHER

This limited warranty is extended to the first owner or by warranty transfer to a new owner of an Alliance Laundry Systems commercial automatic washer. We will provide a free replacement for any of the following parts which fails as a result of a defect in material or workmanship for the period shown below from the date of original installation:

- **THREE** years (36 months) limited warranty on complete washer
- **FIVE** years (60 months) limited warranty on transmission assembly
- **FIVE** years (60 months) limited warranty on base and cabinet assembly against rust and corrosion from the inside out
- **LIFETIME** limited warranty on the stainless steel wash tub against rust and corrosion

COMMERCIAL DRYER, STACKED DRYER, COMMERCIAL TUMBLER OR DRYING TUMBLER

This limited warranty is extended to the first owner or by warranty transfer to a new owner of an Alliance Laundry Systems commercial dryer, commercial tumbler or drying tumbler. We will provide a free replacement for any of the following parts which fails as a result of a defect in material or workmanship for the period shown below from the date of original installation:

- **THREE** years (36 months) limited warranty on complete drying tumbler
- **FIVE** years (60 months) limited warranty on base and cabinet assembly against rust and corrosion from the inside out (small dryer only)

HORIZON FRONTLOAD WASHERS OR STACK WASHER/DRYER+

This limited warranty is extended to the first owner or by warranty transfer to a new owner of an Alliance Laundry Systems commercial frontload washer, stacked dryer or washer/dryer. We will provide a free replacement for any of the following parts which fails as a result of a defect in material or workmanship for the period shown below from the date of original installation:

- **THREE** year (36 months) limited warranty on complete frontload washer and dryer
- **FIVE** year (60 months) limited warranty on the bearings and bearing seal assembly
- **FIVE** years (60 months) limited warranty on base and cabinet assembly against rust and corrosion from the inside out
- **LIFETIME** limited warranty on the stainless steel wash basket against rust and corrosion

COMMERCIAL WASHER-EXTRACTOR (SOFTMOUNT AND HARDMOUNT)*

This limited warranty is extended to the first owner or by warranty transfer to a new owner of an Alliance Laundry Systems commercial frontload washer-extractor (softmount and hardmount models). We will provide a free replacement for any of the following parts which fails as a result of a defect in material or workmanship for the period shown from the date of original installation:

- **THREE** year (36 months) limited warranty on complete washer-extractor
- **FIVE** year (60 months) limited warranty for On-Premises Laundry applications (hardmount and softmount washer-extractor) on the frame, cylinder, shaft assembly, bearings and bearing seal assembly.
- **TEN** year (120 months) limited, transferable warranty for Vended (hardmount washer-extractor) on the frame, cylinder, shaft assembly, bearings and bearings seal assembly.

Limited Warranty - Not Covered

We will not provide a replacement of any part which fails for reasons other than defective material or workmanship. This includes, but is not limited to, failure as a result of abuse, misuse, improper installation and transportation damage. We will not pay labor and transportation charges incurred in the replacement of any part. We are not responsible for any consequential and incidental damages resulting from any malfunction. Refer to warranty bond for specifications.

HOW TO OBTAIN REPLACEMENT PARTS UNDER THIS LIMITED WARRANTY

Parts which fail within the warranty period must be ordered from your local authorized Alliance Laundry Systems parts source. To find the closest authorized company, log onto AllianceLaundry.com. Proof of purchase, model number, serial number and defective part (part return – USA only) are required in order to obtain credit.

* See warranty bond for the details and applicable models and countries.

+ Horizon frontload washer, stacked washer/dryer, installed in On-Premises Laundry (OPL) applications are covered under a one-year (12 months) parts only warranty on entire product. Examples of OPL installations include, but are not limited to, prisons, detention centers, military bases, salons, hotels & fitness centers.